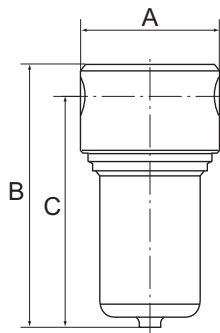
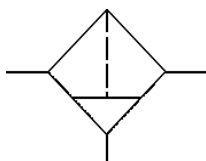


Stainless steel filters for use in the chemical industry, mining, plant construction and special machinery industries, pneumatics, etc.

Max. input pressure	30 bar
Max. medium temperature	80 °C
Max. ambient temperature	60 °C
Housing	Stainless steel casting 1.4401 (AISI 316)
Sealant	NBR
Drain valve	Locking screw
Filter rating	25 µm
Flow rate measurement	At $P_1 = 6$ bar and pressure drop $\Delta p \leq 1$ bar

Stainless steel filter

Art. No.	Type No.	Thread	Flow rate l/min	A mm	B mm	C mm
133549	580FM1-14	G 1/4	2155	64,0	169,0	152,0
133550	580FM1-38	G 3/8	2380	64,0	169,0	152,0
133551	580FM3-12	G 1/2	3485	82,0	170,0	155,0
133552	580FM3-34	G 3/4	5440	82,0	170,0	155,0
133553	580FM4-1	G 1	9960	102,0	190,0	160,0



580FM3-12

Accessories / spare parts for stainless steel filter G 1/4 and G 3/8 (Size 1)

Art. No.	Type No.	Description
137117	580FM-BMA	Stainless steel container
137119	580FM-EF	Replacement filter element
137121	580FM1-ED	Replacement seal

Accessories / spare parts for stainless steel filter G 1/2 and G 3/4 (Size 3)

Art. No.	Type No.	Description
137117	580FM-BMA	Stainless steel container
137119	580FM-EF	Replacement filter element
137122	580FM3-ED	Replacement seal

Accessories / spare parts for stainless steel filter G 1 (Size 4)

Art. No.	Type No.	Description
137118	580FM4-BMA	Stainless steel container
137120	580FM4-EF	Replacement filter element
137123	580FM4-ED	Replacement seal



580FM-BMA



580FM-EF



580FM3-ED